

Media Release August, 2022 Mid-Stream Up-Stream Spotlight:

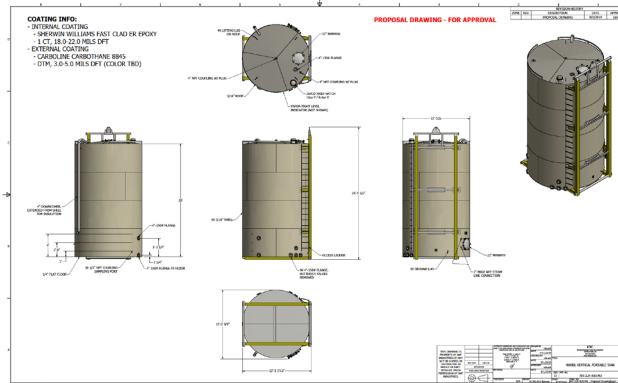
## *Spirit Energy Services, LLC - Beech Bottom, WV Facility*

---

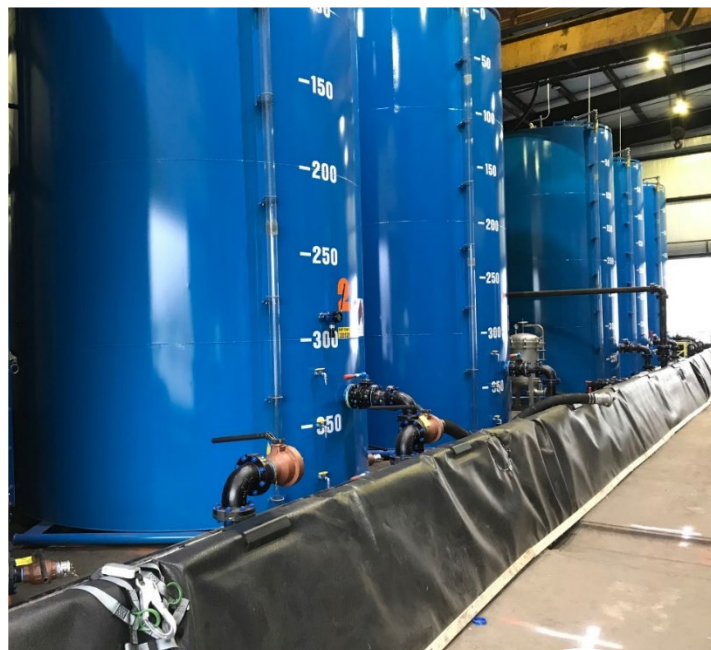


- In 2019, Spirit designed and constructed a brand-new location in Beech Bottom, WV to provide produced fluid management and disposal services in the heart of the Marcellus & Utica Shale fields.

The indoor design includes safety equipment such as Otis Instruments' combustible LEL and Hydrogen Sulfide fixed gas detection sensors.



These sensors provide real time wireless readings to the adjacent offices and alerts to employees' smartphones using Bluetick's telemetry system.



- The facility includes intrinsically safe lighting, pumps and enclosures, and all tanks are vented to a centralized vessel with a filtration system for vapor recovery.
- The tank farm also includes electronic tank gauges with Vega continuous level measurement, visual indication, as well as visual and audible alarms.
- Spirit's in-house QA/QC lab capability includes industry standard ASTM testing for organic chlorides in crude/condensate for incoming and outgoing materials.



- Our processing facilities recover crude and condensate by separating the water and removing the solids. Wastewater is then sent to pre-approved injection wells for proper and safe disposal.
- The finished product is always laboratory tested to ensure quality and to also verify that it meets the regulatory guidelines mandated by local, state, and federal agencies as well as refinery QA/QC standards.
- The process ultimately turns the unwanted water/solids/oil waste mixtures into a "green" product that can be refined or used as an alternative fuel. Other wastes generated in process are disposed of or recycled using industry acknowledged best practices.



<https://www.spritservices.com>

---



**Providing Environmental Solutions for Critical Energy Infrastructure**

**Contact us at (844) 670-9034**

